



City of Long Beach

Working Together to Serve

Memorandum

Date: February 19, 2019

To: Patrick H. West, City Manager *T.H.W.*

From: Claudia Lewis, Interim Director, Long Beach Airport *CL*

For: Mayor and Members of the City Council

Subject: Long Beach Airport Monthly Noise Report for December 2018

Attached is the Long Beach Airport Monthly Noise Report for the month of December 2018.

If you have any questions or require additional information, please contact me at (562) 570-2605.

ATTACHMENT

CC: CHARLES PARKIN, CITY ATTORNEY
LAURA L. DOUD, CITY AUDITOR
DOUGLAS HAUBERT, CITY PROSECUTOR
TOM MODICA, ASSISTANT CITY MANAGER
KEVIN J. JACKSON, DEPUTY CITY MANAGER
REBECCA GARNER, ADMINISTRATIVE DEPUTY TO THE CITY MANAGER

Airport Advisory Commission

Wayne Chaney Sr.
Chair

Jeffrey Anderson
Vice Chair

Alvaro Castillo

Rita Nayak

Phil Ramsdale

Geetanjali Reuben

Jeff Rowe

Roland B. Scott, Jr.

Mary Sophiea

Airport Management

Claudia Lewis
Interim Airport Director

Juan López-Ríos
Deputy Airport Director

Ken Mason
Executive Assistant

Ron Reeves
Airport Operations Manager

Ambi Thurai
Engineering Officer

Dale Worsham
Administrative Officer

Karl Zittel
Airside Operations Officer

Matthew Brookes
Airport Properties Officer

Scott Garrett
Facilities Management Officer

Mony Chhey
Financial Services Officer

Scott Korobkin
Superintendent of Safety and
Security

Ryan McMullan
Noise & Environmental Affairs
Officer



Long Beach Airport Monthly Noise Report December 2018

COMMERCIAL AIRCRAFT LATE NIGHT ACTIVITY
LGB Current Month & Calendar Year-To-Date Statistics (10 PM- 7AM)
December 2018

December				CY-T-D 2018		
10PM - 11PM Activity	2018	2017	Change	2018	2017	Change
Air Carrier & Commuter Operations	2,644	3,123	-15.3%	34,847	36,013	-3.2%
American/Mesa/SkyWest Airlines	0	3	-300.0%	29	22	31.8%
Delta/SkyWest/Compass Airlines	3	6	-50.0%	22	31	-29.0%
FedEx	0	0		0	0	
Hawaiian Airlines	0	0		2	0	200.0%
JetBlue Airways	11	19	-42.1%	302	429	-29.6%
Southwest Airlines	0	0		10	17	-41.2%
UPS	0	0		1	0	100.0%
Subtotal 10PM-11PM	14	28	-50.0%	366	499	-26.7%
11PM- 7AM Activity	2018	2017	Change	2018	2017	Change
American/Mesa/SkyWest Airlines	1	0	100.0%	16	11	45.5%
Delta/SkyWest/Compass Airlines	0	0		6	6	0.0%
FedEx	0	0		0	0	
Hawaiian Airlines	0	0		4	0	400.0%
JetBlue Airways	5	14	-64.3%	185	247	-25.1%
Southwest Airlines	0	0		0	5	-500.0%
UPS	0	0		1	0	100.0%
Subtotal 11PM-7AM	6	14	-57.1%	212	269	-21.2%
TOTAL	20	42	-52.4%	578	768	-24.7%

Notes:

0.8% (20 of 2,644) of total commercial operations occurred between 10pm - 7am.

0.6 flights - Nightly average for all late night (10:00 PM—7:00 AM) commercial flights, includes unanticipated delays.

0.2 flights - Nightly average for commercial flights after 11 PM.

Of the 20 Late-Night Operations, 40% were due to mechanical issues, 15% were due to staffing-related issues, 10% were due to medical issues, 10% occurred during the five-minute grace period, 10% were due to unknown reasons, 5% were due to ferry flights, 5% were due to air traffic control conditions and 5% were due to poor weather conditions.

AIRPORT NOISE VIOLATIONS
LGB Current Month & Calendar Year-To-Date Statistics
December 2018

December				CY-T-D 2018		
Air Carrier Noise Violations	2018	2017	Change	2018	2017	Change
American/Mesa Airlines	1	2	-50.0%	18	9	100.0%
Delta/SkyWest/Compass	0	0		5	4	25.0%
FedEx	0	0		0	0	
Hawaiian Airlines	0	0		4	0	400.0%
JetBlue Airways	7	14	-50.0%	212	247	-14.2%
Southwest Airlines	0	0		0	3	-300.0%
UPS	0	0		1	0	100.0%
Subtotal	8	16	-50.0%	240	263	-8.7%
Commuter Noise Violations	2018	2017	Change	2018	2017	Change
American/SkyWest Airlines	0	0		0	0	
Delta/SkyWest/Compass	0	0		0	0	
Subtotal	0	0		0	0	
Non-Commercial Noise Violations	2018	2017	Change	2018	2017	Change
All GA, Charter & Other	16	9	77.8%	138	172	-19.8%
TOTAL	24	25	-4.0%	378	435	-13.1%
Monetary Fines	2018	2017		2018	2017	
Airport Surcharges	\$3,100	\$1,400		\$65,600	\$24,500	
Consent Decree	\$24,000	\$78,000		\$984,000	\$1,284,000	
TOTAL	\$27,100	\$79,400		\$1,049,600	\$1,308,500	

AIRPORT OPERATIONS
LGB Current Month & Calendar Year-To-Date Statistics
December 2018

December				CY-T-D 2018		
Airport Operations (FAA)	2018	2017	Change	2018	2017	Change
Air Carrier + Commuter Carriers	2,644	3,123	-15.3%	34,847	36,013	-3.2%
Air Taxi + General Aviation	20,216	22,759	-11.2%	238,157	284,432	-16.3%
Military Operations	95	90	5.6%	1,421	1,352	5.1%
Total Aircraft Operations	22,955	25,972	-11.6%	274,425	321,797	-14.7%

Notes:

0.1% (24 of 22,955) of the Airport's total aircraft operations (Commercial & GA) resulted in an aircraft noise violation.
0.3% (8 of 2,644) of the Airport's Commercial operations (Commercial & Commuter) resulted in an aircraft noise violation.

AIRCRAFT NOISE VIOLATORS

December 2018

OWNERNAME	DATE	TIME	A/D	RWY	FLIGHT #	A/C TYPE	ORIG/DEST	SEL	LIMIT	STATUS
JetBlue Airways	12/1/2018	23:37:27	A	30	JBU6121	A320	PDX	93.5	79.0	VIO + Alt Enf
JetBlue Airways	12/3/2018	0:39:10	A	30	JBU1013	A320	JFK	93	79.0	VIO + Alt Enf
M & S Airsupply DBA	12/4/2018	7:47:15	D	26R		B14A		95.3	92.0	VIO
Swift Air LLC	12/5/2018	23:42:00	D	12		B734		93.7	79.0	VIO
JF 28 LLC	12/7/2018	0:26:20	A	30		FA50		89.5	79.0	VIO
Keegan Organization LLC	12/7/2018	0:46:51	A	30		C25C		85.3	79.0	VIO
Hillsboro Aero Academy LLC	12/8/2018	2:56:00	D	30		C172		84.1	79.0	VIO
Private	12/8/2018	16:34:53	A	26R		BE36		92.6	88.0	VIO
O & D TB LLC	12/9/2018	23:43:57	A	30		E50P		85	79.0	VIO
Advanced Air LLC	12/10/2018	15:25:07	A	26R		BE30		90.1	88.0	VIO
Feterik Aviation LLC	12/19/2018	22:24:49	A	30		FA50		94.8	90.0	VIO
JetBlue Airways	12/20/2018	23:10:30	A	30	JBU679	A320	LAS	93.5	79.0	VIO + Alt Enf
N999MD LLC	12/20/2018	23:12:25	A	30		C421		88.1	79.0	VIO
Private	12/24/2018	11:45:20	D	26L		BE18		100	95.0	VIO
JetBlue Airways	12/25/2018	22:51:29	A	30	JBU1013	A320	JFK	93.4	90.0	VIO
JetBlue Airways	12/26/2018	22:23:13	D	30	JBU14	A320	JFK	95.4	90.0	VIO
JetBlue Airways	12/26/2018	22:30:43	A	30	JBU943	A320	FLL	93.9	90.0	VIO
JetBlue Airways	12/27/2018	0:45:35	A	30	JBU405	A320	BOS	92.4	79.0	VIO + Alt Enf
PS LLC	12/27/2018	6:52:26	A	30		GLF4		92.2	90.0	VIO
Raj Consulting LLC	12/27/2018	23:11:10	A	12		C550		85.1	79.0	VIO
American Airlines	12/28/2018	23:19:36	A	30	ASH5791	CRJ9	PHX	90.6	79.0	VIO
Paradigm Air Carriers Inc.	12/29/2018	23:07:58	D	30		B757		91.9	79.0	VIO
Candace A Larned Enterprises Inc	12/31/2018	23:36:24	D	30		C152		82.2	79.0	VIO
Mountain Aviation Inc.	12/31/2018	23:42:05	A	30		C680		82.7	79.0	VIO

DEFINITIONS:

A/C Type — Aircraft Type

RWY — Runway

A/D— Arrival / Departure

SEL — SENEL — Single Event Noise Exposure Level (dBA)

ALT ENF — Alternative Enforcement

VIO—Violation

AIR CARRIER NOISE BUDGET PERFORMANCE

January 2018 - December 2018

RMT #	NOISE BUDGET	ACTUAL	PERCENT BUDGET USED
9	70.7	62.2	87.9%
10	84.6	81.0	95.7%

DEFINITIONS:

RMT — Remote Monitoring Terminal

TOTAL NOISE BUDGET PERFORMANCE

January 2018 - December 2018

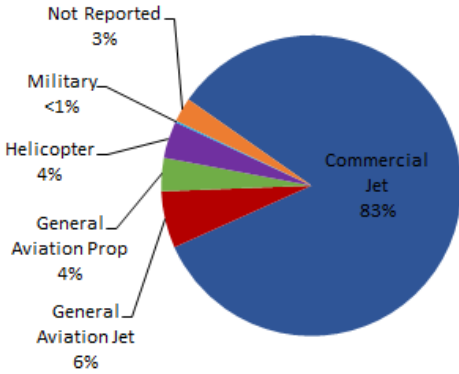
RMT #	NOISE BUDGET	ACTUAL	PERCENT BUDGET USED
9	102.7	76.0	73.9%
10	120.9	97.3	80.5%

Source: LGB staff calculations

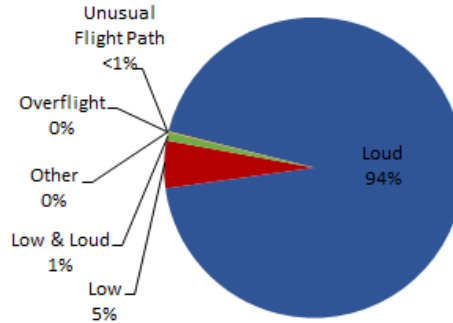
LGB AIRCRAFT NOISE COMPLAINTS

December 2018

Complaints by Aircraft Types



Complaints by Concern



Complaints by Zip Code¹

Zip Code	Complaints	Units
90278	28	2
90505	1	1
90713	8	1
90723	1	1
90740	6	1
90804	1	1
90805	22	2
90807	15	6
90808	2	2
90815	3	2
92612	22	1
92626	501	1
92647	1,169	6
92648	892	12
92649	752	3
92651	4	1
Not Reported	2	2
Grand Total	3,429	45

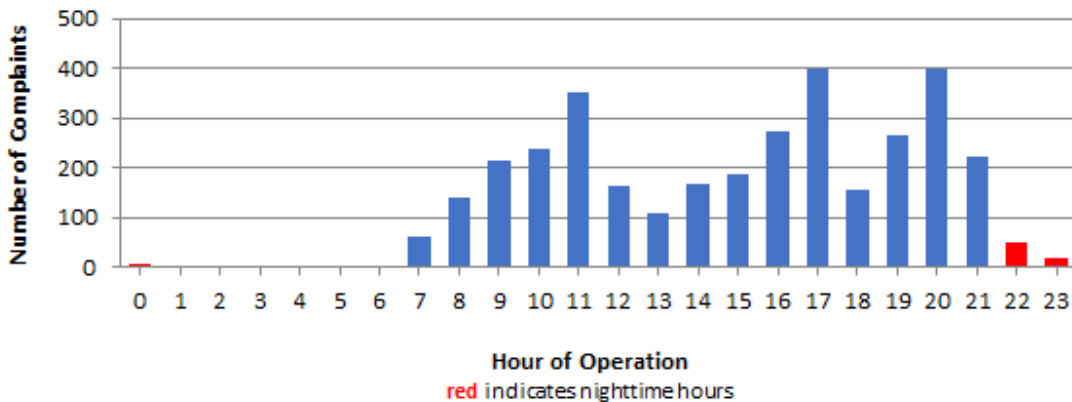
Long Beach Residents' Helicopter Complaints Submitted to FAA²

Zip Code	Individual Complaints	Number of Individuals	Anonymous Complaints	Total Complaints
90802	0	n/a	34	34
90803	0	n/a	37	37
90808	0	n/a	1	1
Grand Total	0	0	72	72

¹ These data include data submitted directly to Long Beach Airport and does not include data submitted to FAA.

² These data reflect helicopter noise complaints submitted directly to FAA.

Complaints by Time of Operation



[THIS PAGE INTENTIONALLY LEFT BLANK]



long beach airport



Long Beach Airport

4100 E. Donald Douglas Drive, Long Beach, CA 90808

www.lgb.org • lgbapt@longbeach.gov

Administration • (562) 570-2619