



City of Long Beach

Working Together to Serve

Memorandum

Date: October 18, 2017

To: Patrick H. West, City Manager *T.H.W.*

From: Jess L. Romo, Director, Long Beach Airport *JLR*

For: Mayor and Members of the City Council

Subject: Long Beach Airport Monthly Noise Report – August 2017

Attached is the Long Beach Airport Monthly Noise Report for August 2017. If you have any questions or require additional information, please contact Airport Director Jess L. Romo at (562) 570-2605.

ATTACHMENT

CC: CHARLES PARKIN, CITY ATTORNEY
LAURA L. DOUD, CITY AUDITOR
DOUGLAS HAUBERT, CITY PROSECUTOR
TOM MODICA, ASSISTANT CITY MANAGER
KEVIN J. JACKSON, DEPUTY CITY MANAGER
REBECCA GARNER, ASSISTANT TO THE CITY MANAGER

Airport Advisory Commission

Wayne Chaney Sr.
Chair

Jeffrey Anderson
Vice Chair

Alvaro Castillo

Hal Gosling

Phil Ramsdale

Jeff Rowe

Roland B. Scott, Jr.

Karen Sherman

Airport Management

Jess L. Romo, A.A.E.
Airport Director

Juan López-Rios
Deputy Airport Director

Ken Mason
Executive Assistant

Claudia Lewis
Manager of Administration
& Finance

Fred Pena
Airport Operations Manager

Ambi Thurai
Engineering Officer

Dale Worsham
Administrative Officer

Karl Zittel
Airside Operations Officer

Stephanie Montuya-Morisky
Public Affairs Officer

Ron Reeves
Noise & Environmental Affairs
Officer



long beach
airport



Long Beach Airport Monthly Noise Report August 2017

COMMERCIAL AIRCRAFT LATE NIGHT ACTIVITY
LGB Current Month & Calendar Year-To-Date Statistics (10 PM- 7AM)
August 2017

August				CY-T-D 2017		
10PM - 11PM Activity	2017	2016	Change	2017	2016	Change
Air Carrier & Commuter Operations	3,096	2,553	21.3%	23,810	16,949	40.5%
American/Mesa Airlines	2	2	0.0%	13	13	0.0%
Delta/SkyWest Airlines	5	0	500.0%	22	16	37.5%
FedEx	0	0		0	0	
JetBlue Airways	48	22	118.2%	333	174	91.4%
Southwest Airlines	1	0	100.0%	15	1	1,400.0%
UPS	0	0		0	0	
Subtotal 10PM-11PM	56	24	133.3%	383	204	87.7%
11PM- 7AM Activity	2017	2016	Change	2017	2016	Change
American/Mesa Airlines	1	1	0.0%	11	21	-47.6%
Delta/SkyWest Airlines	0	0		6	3	100.0%
FedEx	0	0		0	0	
JetBlue Airways	29	19	52.6%	185	96	92.7%
Southwest Airlines	0	1	-100.0%	5	1	400.0%
UPS	0	0		0	0	
Subtotal 11PM-7AM	30	21	42.9%	207	121	71.1%
TOTAL	86	45	91.1%	590	325	81.5%

Notes:

2.8% (86 of 3,096) of total commercial operations occurred between 10pm - 7am.

2.8 flights - Nightly average for all late night (10:00 PM—7:00 AM) commercial flights, includes unanticipated delays.

1.0 flights - Nightly average for commercial flights after 11 PM.

Of the 86 Late-Night Operations, 31% were due to poor weather conditions, 27% were due to maintenance issues, 16% occurred during the 5-minute grace period, 13% were due to air traffic control-related issues, 7% were due to unknown reasons, 5% were due to staffing-related issues and 1% were due to fueling-related issues.

AIRPORT OPERATIONS & AIRCRAFT NOISE VIOLATIONS
LGB Current Month & Calendar Year-To-Date Statistics
August 2017

August				CY-T-D 2017		
Air Carrier Noise Violations	2017	2016	Change	2017	2016	Change
American/Mesa Airlines	0	0		6	4	50.0%
Delta/SkyWest Airlines	0	0		4	4	0.0%
FedEx	0	0		0	0	
JetBlue Airways	24	9	166.7%	181	89	103.4%
Southwest Airlines	0	0		3	0	300.0%
UPS	0	0		0	1	-100.0%
Subtotal	24	9	166.7%	194	98	98.0%
Commuter Noise Violations	2017	2016	Change	2017	2016	Change
American/Mesa Airlines	0	0		0	0	
Delta/SkyWest Airlines	0	0		0	1	-100.0%
Subtotal	0	0		0	1	-100.0%
Non-Commercial Noise Violations	2017	2016	Change	2017	2016	Change
All GA, Charter & Other	17	12	41.7%	120	119	0.8%
TOTAL	41	21	95.2%	314	218	44.0%
Monetary Fines						
Airport Surcharges	\$1,900	\$1,200		\$18,200	\$12,400	
Consent Decree	\$138,000	\$54,000		\$942,000	\$414,000	
TOTAL	\$139,900	\$55,200		\$960,200	\$426,400	

AIRPORT OPERATIONS & AIRCRAFT NOISE VIOLATIONS
LGB Current Month & Calendar Year-To-Date Statistics
August 2017

August				CY-T-D 2017		
Airport Operations (FAA)	2017	2016	Change	2017	2016	Change
Air Carrier + Commuter Carriers	3,096	2,553	21.3%	23,810	16,949	40.5%
Air Taxi + General Aviation	25,624	27,695	-7.5%	187,475	194,276	-3.5%
Military Operations	102	104	-1.9%	950	960	-1.0%
Total Aircraft Operations	28,822	30,352	-5.0%	212,235	212,185	0.0%

Notes:

0.1% (41 of 28,822) of the Airport's total aircraft operations (Commercial & GA) resulted in an aircraft noise violation.
 0.8% (24 of 3,096) of the Airport's Commercial operations (Commercial & Commuter) resulted in an aircraft noise violation.

AIRCRAFT NOISE VIOLATORS

August 2017

OWNERNAME	DATE	TIME	A/D	RWY	A/C TYPE	SEL	LIMIT	STATUS
JetBlue Airways Corporation	8/2/2017	0:52:26	A	30	A320	94	79.0	VIO + Alt Enf
N767CJ LLC	8/2/2017	4:48:59	A	30	H25C	89.3	79.0	VIO
JetBlue Airways Corporation	8/2/2017	23:05:06	A	25R	A320	94.1	n/a	VIO + Alt Enf
JetBlue Airways Corporation	8/3/2017	0:28:27	A	25R	A320	92.1	n/a	VIO + Alt Enf
JetBlue Airways Corporation	8/4/2017	23:11:34	D	30	A320	94.6	79.0	VIO + Alt Enf
SF1 Holdings LLC	8/5/2017	23:10:54	D	30	F2TH	88.2	79.0	VIO
JetBlue Airways Corporation	8/7/2017	23:13:51	D	30	A320	88.1	79.0	VIO + Alt Enf
JetBlue Airways Corporation	8/7/2017	23:25:24	A	30	A320	94	79.0	VIO + Alt Enf
JetBlue Airways Corporation	8/8/2017	23:13:02	D	30	A320	91.3	79.0	VIO + Alt Enf
JetBlue Airways Corporation	8/9/2017	23:56:29	D	30	A320	94.7	79.0	VIO + Alt Enf
Calchem Transportation LLC	8/10/2017	23:17:09	D	30	LJ45	85.9	79.0	VIO
JetBlue Airways Corporation	8/10/2017	23:28:41	A	30	A320	94	79.0	VIO + Alt Enf
Private	8/14/2017	0:14:00	A	30	PA44	83.4	79.0	VIO
BB&T Equipment Finance Corp	8/14/2017	5:43:04	D	30	GLF5	87.5	79.0	VIO
44 October 563 LLC	8/14/2017	22:09:03	D	30	BE40	95.7	90.0	VIO
JetBlue Airways Corporation	8/15/2017	23:09:41	D	30	A320	95.7	79.0	VIO + Alt Enf
JetBlue Airways Corporation	8/15/2017	23:15:02	D	30	A320	92.1	79.0	VIO + Alt Enf
Trinity Broadcasting of Florida Inc.	8/16/2017	5:15:15	D	30	GLEX	92.4	79.0	VIO
Island Express Helicopters Inc.	8/18/2017	13:43:30	A	25R	HELI	94.9	88.0	VIO
JetBlue Airways Corporation	8/19/2017	23:55:36	A	30	A320	93.8	79.0	VIO + Alt Enf
Casey Company	8/20/2017	2:31:49	A	30	C56X	92.6	79.0	VIO
JetBlue Airways Corporation	8/20/2017	23:40:51	A	30	A320	93.7	79.0	VIO + Alt Enf
JetBlue Airways Corporation	8/21/2017	0:42:11	A	30	A320	92.9	79.0	VIO + Alt Enf
JetBlue Airways Corporation	8/21/2017	0:47:33	D	30	A320	94.1	79.0	VIO + Alt Enf
Flexjet, LLC	8/21/2017	5:34:09	D	30	CL30	82.7	79.0	VIO
JetBlue Airways Corporation	8/22/2017	1:07:51	A	30	A320	93.5	79.0	VIO + Alt Enf
Sierra West Airlines	8/22/2017	23:18:42	A	30	SW4	91.4	79.0	VIO
JetBlue Airways Corporation	8/22/2017	23:23:52	A	30	A320	94.1	79.0	VIO + Alt Enf

AIRCRAFT NOISE VIOLATORS

August 2017

OWNERNAME	DATE	TIME	A/D	RWY	A/C TYPE	SEL	LIMIT	STATUS
Private	8/23/2017	23:44:32	A	30	GLF6	89.2	79.0	VIO
Paradigm Air Carriers Inc.	8/24/2017	23:45:00	D	30	B752	94.2	79.0	VIO
Valley Horizons LLC	8/25/2017	23:21:52	A	30	E55P	87.6	79.0	VIO
SkyLife Enterprises LLC	8/26/2017	5:40:15	D	30	COL4	82.2	79.0	VIO
JetBlue Airways Corporation	8/29/2017	22:22:03	D	30	A320	96.8	90.0	VIO
JetBlue Airways Corporation	8/31/2017	0:00:01	A	30	A320	92.9	79.0	VIO + Alt Enf
MLW Aviation LLC	8/31/2017	0:28:08	D	30	B752	95	79.0	VIO
JetBlue Airways Corporation	8/31/2017	0:42:18	A	30	A320	93.1	79.0	VIO + Alt Enf
JetBlue Airways Corporation	8/31/2017	1:04:13	D	30	A320	96.4	79.0	VIO + Alt Enf
JetBlue Airways Corporation	8/31/2017	1:38:00	D	30	A320	92	79.0	VIO + Alt Enf
JetBlue Airways Corporation	8/31/2017	1:59:17	D	30	A320	96.2	79.0	VIO + Alt Enf
Jacob Stern & Sons Inc.	8/31/2017	6:49:14	A	30	C56X	93.8	90.0	VIO
JetBlue Airways Corporation	8/31/2017	23:36:01	A	30	A320	92.9	79.0	VIO + Alt Enf

DEFINITIONS:

A/C Type — Aircraft Type

A/D/G — Arrival / Departure / Ground Operation

ALT ENF — Alternative Enforcement

RWY — Runway

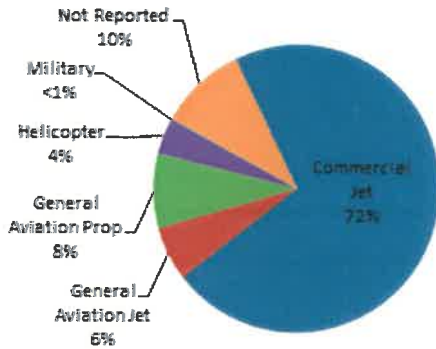
SEL — SENEL — Single Event Noise Exposure Level (dBA)

VIO — Violation

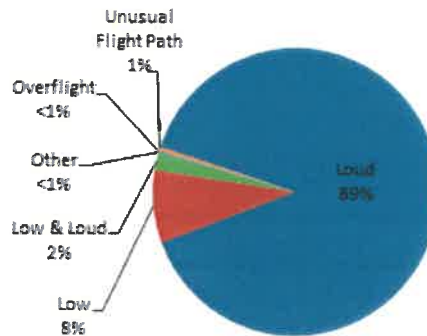
LGB AIRCRAFT NOISE COMPLAINTS

August 2017

Complaints by Aircraft Types



Complaints by Concern



Complaints by Zip Code¹

Zip Code	Complaints	Units
90501	1	1
90505	1	1
90740	24	3
90746	1	1
90804	1	1
90805	32	2
90807	118	39
90808	16	12
90814	1	1
90815	12	6
92612	52	1
92626	437	5
92646	5	1
92647	3	3
92648	128	12
92649	494	13
Not Reported	3	3
Grand Total	1,329	105

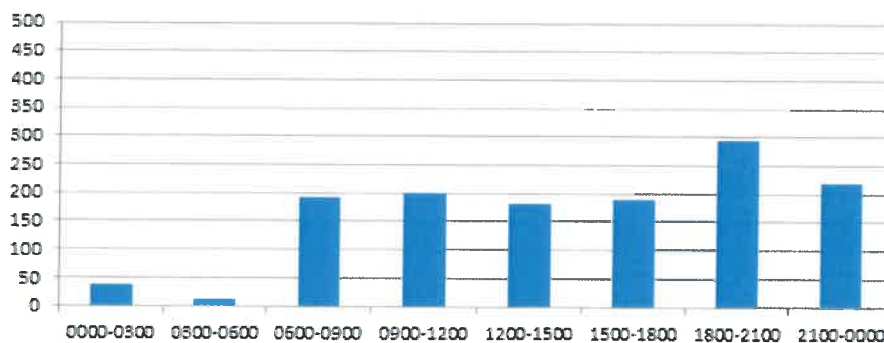
Long Beach Residents' Helicopter Complaints Submitted to FAA²

Zip Code	Individual Complaints	Number of Individuals	Anonymous Complaints	Total Complaints
90802	6	3	4	10
90803	262	11	149	411
90804	3	2	4	7
90807	0	n/a	5	5
90808	0	n/a	37	37
Grand Total	705	28	245	950

¹ These data include data submitted directly to Long Beach Airport and does not include data submitted to FAA.

² These data reflect helicopter noise complaints submitted directly to FAA.

Complaints by Time





long beach airport



Long Beach Airport

4100 E. Donald Douglas Drive, Long Beach, CA 90808

www.lgb.org • lgbarpt@longbeach.gov

Administration • (562) 570-2619