

BUSINESS PARTNER BRIEF

FEBRUARY 2026



Director's Message

There's so much to share with you this month! I'm excited to keep you in the loop about our Fly Long Beach gateway sign, recent emergency preparedness training, sustainability efforts, and more in this month's Business Partner Brief. Thank you, as always, for your continued partnership and support. — Cynthia Guidry

Business Partner Spotlight: Giovanna "Gia" Martinelli with Paradies Lagardère

We're pleased to shine this month's Business Partner Spotlight on Giovanna "Gia" Martinelli with Paradies Lagardère. For her work as a bartender at Boathouse on the Bay at LGB, Gia was recently recognized with a national First-Class Service Presidential Leadership Award from Paradies Lagardère, which is a leading North American airport concessions operator. She was presented with the honor at a gala in Atlanta.

Her colleagues say the recognition is a true testament to Gia's unwavering dedication, professionalism, and commitment to excellence in service. Gia's true people-first approach is so valued that she has been featured in Airport videos, guest spotlights and public showcases because of how she inspires others.

"From going the extra mile for every guest to embodying the highest standards of hospitality, Gia consistently delivers service that is not just good—but exceptional," said Kuldip Johal, Paradies Lagardère Flagship Manager-Dining Division at LGB. "With over 100 glowing reviews, her genuine care and attention leave a lasting impact on everyone she serves."

Let's all take a moment to applaud Gia for setting such an inspiring example of first-class service!

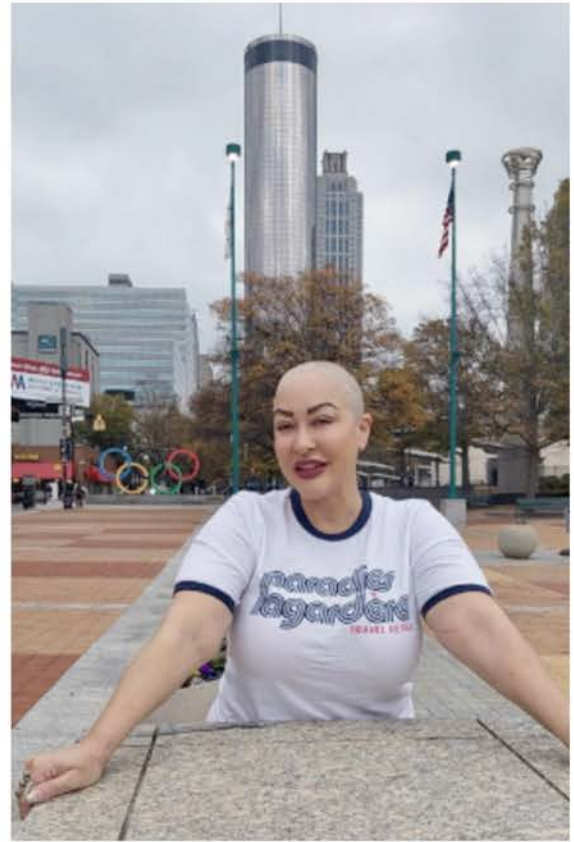
In her own words, here's more about Gia:

"As someone who was born and raised in Long Beach, I have so much love and pride for this beautiful city. My position at the Boathouse has always been more than a job. More importantly, it has been such an honor for me to represent my city as I greet travelers and locals alike. Being recognized by my company in November and receiving my award for excellence in service illustrated the legacy my service has created. I'm just shy of 13 years with Paradis Lagardère, and I hope to continue for many more.

The structure and income created by my position afford me great independence. This gift allowed me to leave a toxic marriage—and as if that was not gift enough, my position was the foundation that allowed me to graduate from CSULB with honors! I majored in sociology and minored in communications. My degree elevated my service, which is HIGHLY focused on listening. People travel for pleasure, but many people travel for bereavement and very challenging life circumstances. My role is not simply one to provide food and drink, but support and sensitivity to what my guests may be going through.

My deepest passion is acting, which has been a lifelong endeavor. I'm so happy that this job provides the flexibility I need to make those dreams a reality. I got back on stage four years ago and take on public speaking every opportunity that I get, including when I've been blessed with opportunities here at LGB. I want to be very clear about one thing. As we are never guaranteed a tomorrow, I realize there is no certainty of my entertainment dreams evolving. If this position is where I end my career, I am SO beyond happy with this result.

I NEVER saw this love and appreciation coming. It is so rewarding every day to come into work and serve the multitudes that travel through our city. Their appreciation thoroughly fills my soul. My management and staff deserve their own award for supporting me in the many ways that they do. I am one blessed bartender."



Fly Long Beach Gateway Sign Update

Construction of the new Fly Long Beach gateway sign got underway last month and is set to conclude by June 2026. Located along southbound Lakewood Boulevard just south of Spring Street, the 125-foot-long, 12-foot-high sign will feature programmable colored lighting, creating a vibrant nighttime display that celebrates and promotes Long Beach Airport to passing drivers. The project will have limited traffic impacts. Two separate weeks of lane closures are anticipated, one in March and another in May, with closures taking place between 8:30 a.m. and 3:30 p.m. to avoid peak traffic hours. Overall, construction is expected to cause minimal disruption while adding a striking new landmark to the area.



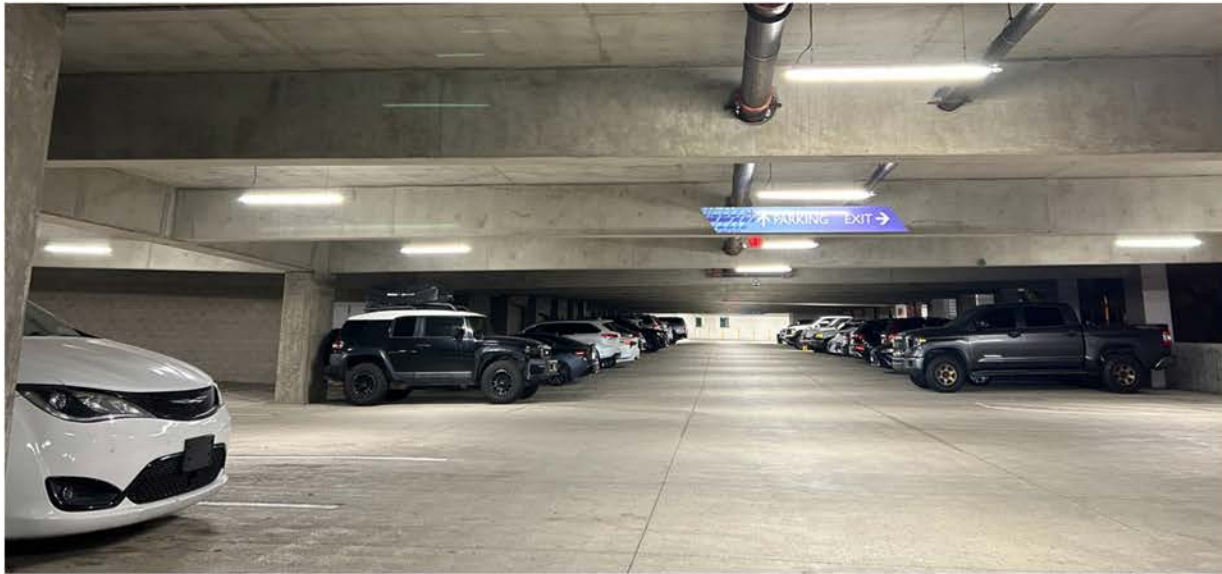
Fire Department Training Exercise

As part of its work to be emergency-ready, Long Beach Fire Department Station 16 conducted a required Aircraft Rescue and Fire Fighting (ARFF) training exercise at LGB, marking the first time the new ARFF rigs were used to extinguish live fire scenarios. The controlled training included visible emergency vehicles and smoke on the airfield and was completed with no impact to aircraft operations. Such exercises are critical to maintaining the highest level of readiness and safety for our Airport and the traveling public.



Parking Structure Lighting Upgrade

Striving to make our operations as efficient and sustainable as possible, LGB recently completed the conversion of 784 standard light fixtures in Parking Structure B to energy-efficient LEDs. The brightness level of the new fixtures is adjustable based on movement, improving visibility and safety while reducing energy use. What a smart innovation!



Plan Your Next Getaway

In honor of National Plan for Vacation Day on January 27, Long Beach Airport highlighted its online [FlyMyAirport search tool](#), which allows travelers to quickly search nonstop and connecting flights to and from LGB, compare options, and explore travel packages that include hotels and rental cars. Powered by KAYAK and developed by Airport One, LLC, the tool showcases LGB's growing connectivity—currently offering nonstop service to 21 airports nationwide, including Hawaii, and one-stop access to nearly 400 destinations worldwide. It's another way LGB is helping passengers plan seamless, stress-free travel while maximizing the convenience of flying local.



Seen at the Scene

An annual tradition, LGB proudly participated in the Dr. Martin Luther King Jr. Parade last month. Employees, family, and friends joined in the lively celebration, riding and walking alongside LGB's parade float.



Long Beach State basketball fans scored special LGB-branded youth jerseys at a recent game against Cal State Bakersfield. The Beach won in an 81-75 victory that night at the Pyramid, and our LGB volunteers had a great time cheering on the team and connecting with the community.



Long Beach Mayor Rex Richardson held the 2026 State of the City Address last month in downtown Long Beach. With the theme "A Future Built by All of Us," highlighting the people, culture, and creativity that shape our city. If you missed the event, a recording is available at <https://longbeach.gov/stateofthecity>.

Black History Month

In celebration of Black History Month, here's a look at Dora Miles (left) and Dorothy Johnson working together at Douglas Aircraft Company, where black and white women were employed to help manufacture planes for WWII. Read more about LGB's history in our [centennial report](#).
– Photo courtesy Historical Society of Long Beach #BlackHistoryMonth



December Passenger Traffic

LGB expects to end the 2025 calendar year 2025 with nearly 3.8 million travelers total passing through our Airport.

	Dec 2025	Dec 2024	% Change	YTD 2025	YTD 2024	% Change
Passenger Traffic						
Enplanements	165,729	174,021	-4.8%	1,906,221	2,068,742	-7.9%
Deplanements	167,363	178,499	-6.2%	1,911,759	2,079,338	-8.1%
Total Passenger Traffic	333,092	352,520	-5.5%	3,817,980	4,148,080	-8.0%
Total Air Cargo (Tons)	2,111	1,917	10.1%	16,618	12,360	34.4%

Airport Administrative Offices Holiday Closure

Long Beach Airport administrative offices will be closed on Monday, February 16, in observance of Presidents' Day. Airport operations, security and building services will continue uninterrupted.



Cynthia Guidry
Airport Director