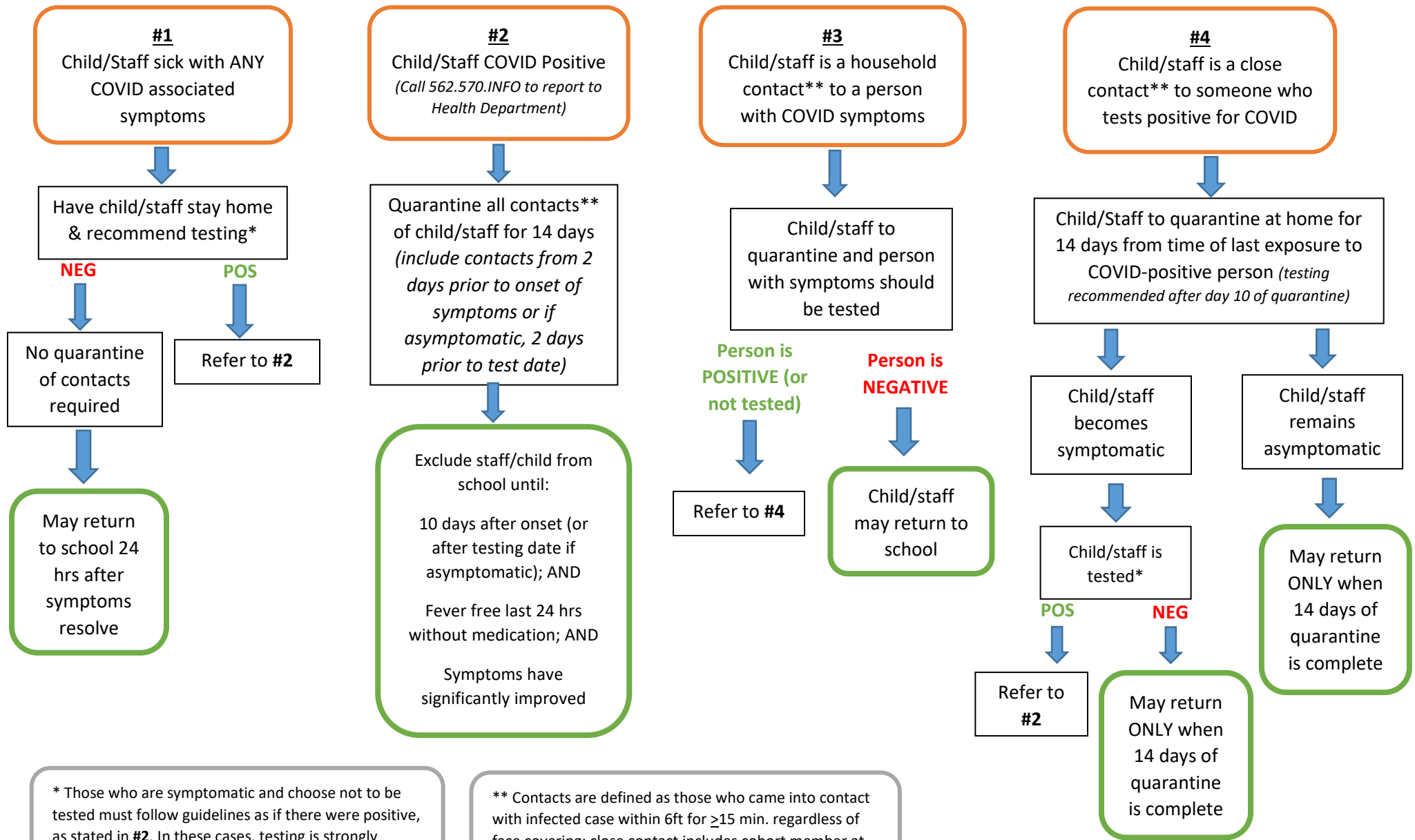


SCHOOL/CAMP/DAYCARE COVID-19 FLOWCHART



* Those who are symptomatic and choose not to be tested must follow guidelines as if there were positive, as stated in #2. In these cases, testing is strongly encouraged.

** Contacts are defined as those who came into contact with infected case within 6ft for ≥15 min. regardless of face covering; close contact includes cohort member at school, household member, or others.