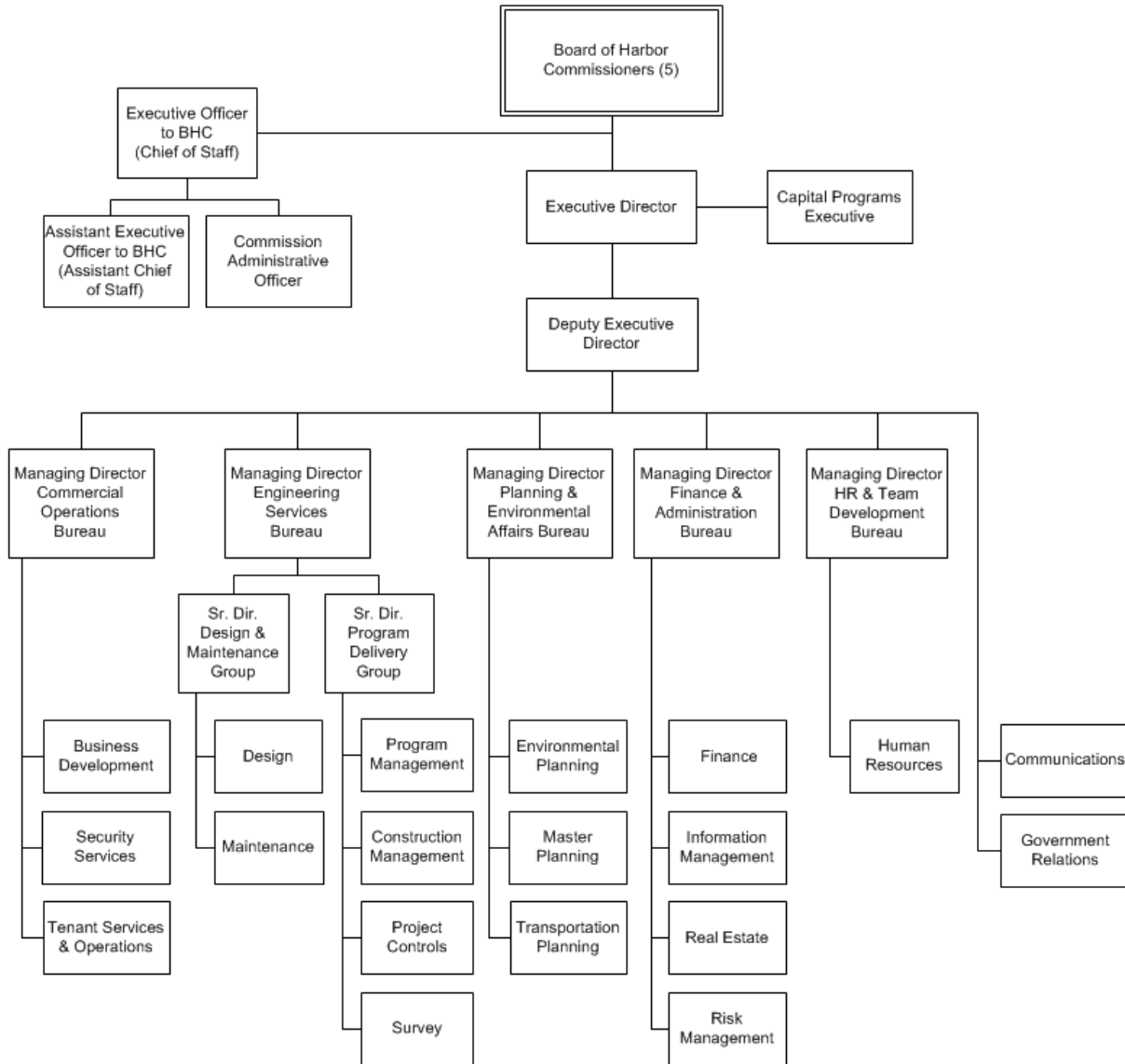


Harbor



Mission Statement

The Port of Long Beach is an international gateway for the reliable, efficient and sustainable movement of goods for the benefit of our local and global economies.

Financial Summary

	Actual	Adopted*	Adjusted*	Proposed*
	FY 16	FY 17	FY 17	FY 18
Revenues:				
Property Taxes	-	-	-	-
Other Taxes	-	-	-	-
Franchise Fees	-	-	-	-
Licenses and Permits	46,267	-	-	-
Fines and Forfeitures	-	-	-	-
Use of Money & Property	7,331,394	6,468,000	6,468,000	8,536,000
Revenue from Other Agencies	123,876,942	119,266,000	119,266,000	106,362,000
Charges for Services	363,076,250	374,904,000	374,904,000	381,874,000
Other Revenues	9,450,509	1,000,000	1,000,000	26,000,000
Interfund Services - Charges	-	-	-	-
Intrafund Services - General Fund Charges	-	-	-	-
Harbor & Water P/R Rev Trsfs	-	-	-	-
Other Financing Sources	-	237,296,000	237,296,000	225,000,000
Operating Transfers	-	-	-	-
	-----	-----	-----	-----
Total Revenues	503,781,363	738,934,000	738,934,000	747,772,000
Expenditures:				
Salaries, Wages and Benefits	67,182,297	76,927,035	76,927,035	84,958,183
Overtime	1,627,441	1,755,847	1,755,847	1,901,088
Materials, Supplies and Services	426,802,477	46,999,338	46,999,338	48,180,675
Internal Support	29,167,134	30,876,871	30,876,871	34,098,394
Capital Purchases	(8,503,768)	484,538,380	484,288,380	443,555,284
Debt Service	69,878,189	113,160,900	113,160,900	95,211,400
Transfers to Other Funds	28,038,047	17,772,700	18,022,700	18,661,550
	-----	-----	-----	-----
Total Expenditures	614,191,817	772,031,071	772,031,071	726,566,574
Personnel (Full-time Equivalents)	585.80	583.80	583.80	583.50

* Amounts exclude all-years carryover.

Personnel Summary

	FY 16 Adopt FTE	FY 17 Adopt FTE	FY 18 Prop FTE	FY 17 Adopted Budget	FY 18 Proposed Budget
Executive Director	1.00	1.00	1.00	351,346	364,140
Accountant II	1.00	1.00	1.00	73,395	75,274
Accountant III	3.00	3.00	3.00	241,411	239,778
Accounting Clerk II	1.00	1.00	1.00	39,770	44,542
Accounting Clerk III	3.00	1.00	1.00	50,976	53,036
Accounting Technician	3.00	4.00	4.00	226,439	235,529
Administrative Aide I	3.00	3.00	3.00	165,756	171,366
Administrative Aide II	7.00	7.00	7.00	400,515	420,004
Administrative Aide III	2.00	-	-	-	-
Administrative Analyst I	4.00	4.00	5.00	273,584	355,414
Administrative Analyst II	8.00	7.00	5.00	548,158	418,176
Administrative Analyst III	10.00	9.00	11.00	812,018	1,029,072
Administrative Intern-NC/H36	8.50	7.50	3.50	272,012	132,052
Administrative Intern-NC/H38	-	0.50	1.00	20,211	42,050
Administrative Intern-NC/H39	3.00	4.00	4.50	168,553	197,261
Administrative Intern-NC/H40	-	0.50	1.00	21,938	45,644
Assistant Administrative Analyst I	3.00	3.00	2.00	172,087	116,300
Assistant Administrative Analyst II	11.00	14.00	12.00	928,024	832,044
Assistant Director of Business Development	1.00	1.00	1.00	140,539	146,217
Assistant Director of Communications	1.00	1.00	1.00	140,539	145,656
Assistant Director of Construction Management	1.00	1.00	1.00	154,593	160,839
Assistant Director of Engineering Design	1.00	1.00	1.00	145,559	151,439
Assistant Director of Environmental Planning	1.00	1.00	1.00	141,253	146,960
Assistant Director of Finance	1.00	1.00	1.00	140,000	151,439
Assistant Director of Homeland Security	1.00	1.00	1.00	154,637	156,659
Assistant Director of Human Resources	1.00	1.00	1.00	140,539	146,217
Assistant Director of Information Management	1.00	1.00	1.00	151,380	157,496
Assistant Director of Program Management	1.00	1.00	1.00	145,559	151,439
Assistant Director of Real Estate	1.00	1.00	1.00	140,539	146,217
Assistant Director of Security Support	1.00	1.00	1.00	151,380	156,659
Assistant Executive Officer to the Board	1.00	1.00	1.00	110,000	114,444
Assistant Marketing Manager III	2.00	2.00	2.00	179,918	189,225
Assistant Terminal Services Manager	1.00	1.00	1.00	80,035	85,378
Assistant to the Executive Director	1.00	1.00	1.00	88,153	91,715
Building Maintenance Engineer	3.00	3.00	4.00	229,473	304,572
Capital Programs Executive	1.00	1.00	1.00	250,963	260,100
Capital Projects Coordinator II	1.00	1.00	1.00	84,222	83,285
Capital Projects Coordinator III	5.00	6.00	5.00	636,204	551,958
Capital Projects Coordinator IV	1.00	1.00	2.00	115,234	231,155
Carpenter	1.00	1.00	1.00	62,254	62,254
Chief Construction Inspector	1.00	1.00	1.00	93,664	103,874
Chief of Staff	1.00	1.00	1.00	180,693	187,993
Chief Surveyor	1.00	-	1.00	-	103,433
Civil Engineer	16.00	15.00	12.00	1,558,353	1,249,823
Civil Engineering Assistant	8.00	8.00	6.00	595,725	445,286

Personnel Summary

Classification	FY 16 Adopt FTE	FY 17 Adopt FTE	FY 18 Prop FTE	FY 17 Adopted Budget	FY 18 Proposed Budget
Civil Engineering Associate	9.00	8.00	11.00	762,835	991,475
Clerk Typist II	5.00	4.00	2.00	173,169	93,090
Clerk Typist III	19.00	16.00	18.00	772,339	877,722
Clerk Typist III-NC	1.00	-	1.00	-	42,692
Clerk Typist II-NC	1.00	1.00	1.00	32,872	39,948
Clerk Typist IV	-	2.00	2.00	106,584	100,263
Commercial Diver I	2.00	-	-	-	-
Commercial Diver II	4.00	6.00	6.00	472,846	497,243
Commission Administrative Officer	1.00	1.00	1.00	95,367	104,440
Communications Officer	3.00	3.00	4.00	294,333	385,245
Construction Inspector I	2.00	2.00	1.00	128,446	64,223
Construction Inspector II	14.00	14.00	13.00	1,245,316	1,119,779
Construction Supervisor	1.00	1.00	1.00	72,351	75,274
Contract Administrator II	1.00	1.00	-	68,837	-
Contract Compliance Analyst II	-	1.00	1.00	76,586	76,454
Deputy Chief Harbor Engineer II	7.00	8.00	9.00	1,151,758	1,269,488
Deputy Executive Director	-	-	1.00	-	306,918
Director of Business Development	1.00	1.00	1.00	160,617	167,106
Director of Communications	1.00	1.00	1.00	158,951	171,666
Director of Construction Management	1.00	1.00	1.00	162,864	169,444
Director of Engineering Design	1.00	1.00	1.00	162,864	169,444
Director of Environmental Services	1.00	1.00	1.00	157,404	163,763
Director of Finance	1.00	1.00	1.00	159,496	167,104
Director of Governmental Affairs	1.00	1.00	1.00	157,404	163,763
Director of Human Resources	1.00	1.00	1.00	165,148	171,666
Director of Information Management	1.00	1.00	1.00	170,654	177,549
Director of Maintenance	1.00	1.00	1.00	157,404	163,763
Director of Marketing	1.00	-	-	-	-
Director of Master Planning	1.00	1.00	1.00	157,404	163,763
Director of Program Management	1.00	1.00	1.00	165,148	171,666
Director of Project Controls	1.00	1.00	1.00	160,617	167,106
Director of Real Estate	1.00	1.00	1.00	157,918	171,820
Director of Risk Management	1.00	1.00	1.00	157,404	163,763
Director of Security	1.00	1.00	1.00	175,392	182,478
Director of Surveys	-	1.00	1.00	156,800	163,763
Director of Team Development	1.00	-	-	-	-
Director of Tenant Services & Operations	1.00	1.00	1.00	157,404	163,763
Director of Transportation Planning	1.00	1.00	1.00	156,800	163,763
Electrical Engineer	1.00	1.00	1.00	114,274	114,274
Electrical Supervisor	1.00	1.00	1.00	74,270	77,271
Electrician	3.00	3.00	3.00	184,523	196,483
Engineering Tech II	1.00	1.00	1.00	72,790	72,790
Environmental Remediation Specialist II	1.00	1.00	1.00	126,495	126,495
Environmental Specialist Assistant	2.00	3.00	3.00	207,140	227,787

Personnel Summary

Classification	FY 16 Adopt FTE	FY 17 Adopt FTE	FY 18 Prop FTE	FY 17 Adopted Budget	FY 18 Proposed Budget
Environmental Specialist Associate	3.00	2.00	2.00	189,503	174,125
Environmental Specialist I	5.00	5.00	5.00	545,761	556,302
Environmental Specialist II	2.00	2.00	2.00	252,990	229,928
Equipment Mechanic II	3.00	3.00	3.00	199,740	193,255
Equipment Operator III	5.00	5.00	5.00	270,171	278,182
Executive Secretary - Harbor	4.00	4.00	4.00	293,817	303,000
Financial Reporting/Controls Officer	1.00	-	-	-	-
Garage Service Attendant II	2.00	2.00	2.00	99,343	99,343
Garage Service Attendant I-NC	0.20	0.20	0.40	6,912	13,822
Garage Supervisor	1.00	1.00	1.00	74,454	80,777
Gardener II	2.00	2.00	2.00	90,130	90,130
General Maintenance Assistant	5.00	5.00	4.00	242,333	200,600
Geographic Information Systems Analyst II	3.00	3.00	3.00	253,391	253,391
Geographic Information Systems Analyst III	1.00	1.00	1.00	94,438	93,394
Geographic Information Systems Tech I	1.00	1.00	1.00	53,289	58,255
Geographic Information Systems Tech II	2.00	2.00	2.00	130,989	136,281
Harbor Control Center Supervisor	1.00	1.00	1.00	90,939	94,613
Harbor Maintenance Mechanic I	1.00	1.00	-	56,244	-
Harbor Maintenance Mechanic II	6.00	6.00	7.00	340,559	387,815
Harbor Marine Engineer	-	-	1.00	-	103,433
Intermodal Operations Coordinator	-	-	2.00	-	210,253
Intermodal Operations Manager	-	2.00	1.00	238,285	151,439
Maintenance Assistant I	8.00	8.00	8.00	308,222	301,401
Maintenance Assistant II	1.00	1.00	1.00	42,482	42,482
Maintenance Assistant III	6.00	6.00	6.00	263,980	273,600
Maintenance Assistant I-NC	1.50	1.50	1.50	49,782	49,776
Maintenance Planner II	4.00	4.00	3.00	304,024	235,032
Maintenance Supervisor	2.00	2.00	2.00	141,182	146,744
Manager of Accounting	1.00	1.00	1.00	125,483	130,552
Manager of Air Quality Practices	1.00	1.00	1.00	129,458	134,688
Manager of Business Applications	1.00	1.00	1.00	142,506	148,263
Manager of Business Development	1.00	1.00	1.00	125,483	130,552
Manager of Business Development-FTZ	1.00	1.00	1.00	125,000	130,552
Manager of CEQA/NEPA Projects	1.00	1.00	1.00	129,345	134,571
Manager of Commercial Trade - Import Cargo	1.00	1.00	1.00	125,483	130,552
Manager of Commercial Trade - Ocean Carriers	1.00	1.00	1.00	125,480	130,550
Manager of Contract Compliance	1.00	1.00	1.00	132,811	140,454
Manager of Cyber Information Security	-	-	1.00	-	150,858
Manager of Emergency Management	1.00	1.00	1.00	131,544	136,858
Manager of Engineering Technology	1.00	1.00	1.00	135,520	140,995
Manager of Environmental Remediation	1.00	1.00	1.00	133,267	138,651
Manager of Facilities Maintenance	1.00	1.00	1.00	125,483	130,552
Manager of Financial Planning & Analysis	1.00	1.00	1.00	139,374	145,005
Manager of Fleet/Utilities	1.00	1.00	1.00	125,483	130,552
Manager of Grants Administration	1.00	1.00	1.00	125,483	130,552
Manager of Harbor Marine	1.00	1.00	1.00	140,940	146,634

Personnel Summary

Classification	FY 16 Adopt FTE	FY 17 Adopt FTE	FY 18 Prop FTE	FY 17 Adopted Budget	FY 18 Proposed Budget
Manager of Infrastructure Maintenance	1.00	1.00	1.00	125,483	130,552
Manager of Labor Compliance Administration	1.00	1.00	1.00	115,000	119,646
Manager of Master Planning	1.00	1.00	1.00	113,000	134,625
Manager of Network Operations	1.00	1.00	1.00	142,704	150,858
Manager of Procurement	1.00	1.00	-	125,000	-
Manager of Project Controls	1.00	1.00	1.00	130,000	135,252
Manager of Rail Operations	1.00	-	-	-	-
Manager of Safety/Business Continuity	1.00	1.00	1.00	133,269	138,653
Manager of Security Operations	2.00	2.00	2.00	255,985	266,326
Manager of Sustainable Practices	1.00	1.00	1.00	133,265	138,648
Manager of Technical Security	1.00	1.00	1.00	135,720	141,203
Manager of Transportation Planning	1.00	1.00	1.00	140,000	131,154
Manager of Water Quality	1.00	1.00	1.00	133,267	138,651
Managing Director	6.00	6.00	5.00	1,386,133	1,196,223
Mechanical Supervisor	1.00	1.00	1.00	85,249	71,632
Members - Boards / Commissions	-	-	-	26,000	26,000
Motor Sweeper Operator	1.00	1.00	1.00	54,792	57,585
Office Automation Analyst I	-	1.00	1.00	59,757	65,354
Office Automation Analyst II	2.00	2.00	2.00	138,833	154,509
Office Automation Analyst III	2.00	2.00	2.00	164,125	170,756
Office Automation Analyst IV	1.00	1.00	1.00	86,399	73,412
Office Services Assistant I	1.00	-	-	-	-
Office Services Assistant III	-	1.00	1.00	45,645	47,389
Office Systems Analyst I	2.00	2.00	2.00	187,323	199,079
Office Systems Analyst II	6.00	6.00	6.00	617,023	667,278
Office Systems Analyst III	13.00	11.00	11.00	1,315,513	1,386,167
Painter II	1.00	1.00	1.00	59,209	59,209
Painter Supervisor	1.00	1.00	1.00	67,910	70,556
Park Maintenance Supervisor	1.00	1.00	1.00	53,166	63,904
Payroll Personnel Assistant III	1.00	1.00	1.00	53,524	55,686
Plumber	6.00	6.00	6.00	392,158	398,180
Plumber Supervisor	1.00	1.00	1.00	64,621	77,271
Port Commercial Appraiser	1.00	1.00	1.00	115,354	118,928
Port Communications Specialist II	1.20	0.20	0.20	10,772	11,206
Port Communications Specialist III	4.00	4.00	4.00	275,847	289,283
Port Communications Specialist IV	2.00	3.00	3.00	228,367	225,173
Port Communications Specialist V	7.00	7.00	7.00	607,736	635,220
Port Financial Analyst II	-	-	1.00	-	92,216
Port Financial Analyst III	4.00	4.00	3.00	444,077	332,311
Port Leasing Sales Officer I	-	1.00	1.00	52,258	58,910
Port Leasing Sales Officer IV	3.00	-	-	-	-
Port Leasing Sales Officer V	-	3.00	3.00	317,472	330,298
Port Planner II	1.00	2.00	2.00	189,869	180,767
Port Planner III	3.00	1.00	2.00	103,241	195,036
Port Planner IV	-	1.00	1.00	99,233	116,030

Personnel Summary

Classification	FY 16 Adopt FTE	FY 17 Adopt FTE	FY 18 Prop FTE	FY 17 Adopted Budget	FY 18 Proposed Budget
Port Planner V	3.00	3.00	2.00	348,190	233,645
Port Risk Manager II	1.00	1.00	1.00	98,111	102,075
Port Security System Operator II	9.00	9.00	9.00	591,513	623,486
Port Security System Operator III	4.00	4.00	4.00	306,034	319,800
Port Security Systems Oper I-NC	2.00	2.00	2.00	91,454	95,138
Port Senior Crane Operator	-	-	2.00	-	121,112
Port Trade Analyst	1.00	1.00	1.00	72,366	92,197
Principal Construction Inspector	4.00	4.00	4.00	397,280	398,968
Program Scheduler	1.00	-	-	-	-
Project Budget Analyst	-	2.00	3.00	148,569	231,857
Project Scheduler I	-	1.00	1.00	82,603	101,080
Project Scheduler II	-	1.00	3.00	98,031	336,200
Records Center Supervisor II	1.00	1.00	1.00	68,837	71,618
Revenue Manager	-	-	1.00	-	130,552
Safety Specialist II	2.00	2.00	2.00	164,125	170,756
Secretary	11.00	9.00	10.00	462,104	502,734
Senior Accountant	-	1.00	1.00	74,285	85,430
Senior Civil Engineer	24.00	24.00	25.00	2,976,401	3,122,072
Senior Director of Design/Maintenance	1.00	1.00	1.00	182,700	190,081
Senior Director of Engineering Program Delivery	1.00	1.00	1.00	182,700	189,353
Senior Electrical Engineer	1.00	1.00	1.00	126,495	126,495
Senior Electrical Inspector	1.00	1.00	1.00	88,333	88,333
Senior Engineering Tech I	2.00	2.00	2.00	172,105	172,105
Senior Engineering Tech II	1.00	1.00	1.00	90,552	90,552
Senior Equipment Operator	3.00	3.00	1.00	187,840	68,330
Senior Executive of Supply Chain Optimization	-	1.00	-	226,629	-
Senior Port Leasing Officer	1.00	1.00	1.00	108,641	118,928
Senior Program Manager	5.00	5.00	5.00	667,506	699,631
Senior Scheduler	4.00	4.00	3.00	453,059	379,486
Senior Secretary	6.00	7.00	8.00	368,708	443,743
Senior Structural Engineer	1.00	1.00	1.00	132,640	132,640
Senior Survey Technician	6.00	6.00	5.00	473,391	389,674
Senior Surveyor	4.00	4.00	4.00	406,308	404,220
Senior Traffic Engineer	1.40	1.40	1.40	163,650	141,945
Special Services Officer II	5.00	5.00	5.00	281,994	300,390
Special Services Officer III	39.00	39.00	39.00	2,232,917	2,281,541
Special Services Officer II-NC	-	10.00	10.00	421,510	458,200
Special Services Officer I-NC	10.00	-	-	-	-
Special Services Officer IV	9.00	9.00	9.00	609,794	653,206
Stock & Receiving Clerk	1.00	1.00	1.00	42,482	44,199
Storekeeper	1.00	1.00	1.00	54,904	57,122
Supervisor of Commercial Diving	1.00	1.00	1.00	95,441	104,168
Supervisor-Stores/Property	1.00	1.00	1.00	52,258	61,336
Supply Chain Optimization Executive	1.00	-	-	-	-
Survey Technician	5.00	5.00	5.00	339,676	347,566

Key Contacts

Mario Cordero, Executive Director *

Duane Kenagy, Deputy Executive Director

Al Moro, Acting Senior Executive Lead, Capital Programs

Sam Joumblat, Managing Director, Finance & Administration Bureau

Sean Gamette, Managing Director, Engineering Services Bureau

Rick Cameron, Managing Director, Planning and Environmental Affairs Bureau

Noel Hacegaba, Managing Director, Commercial Operations Bureau

Louis Gutierrez, Managing Director, Human Resources & Team Development Bureau

Maurina Lee, Director of Finance

4801 Airport Plaza Dr.
Long Beach, CA 90815
Phone: (562) 283-7550
www.polb.com

* For Fiscal Year 2018, the Communications Bureau will report to the Executive Director.

