

## Airport Advisory Commission

**Bob Luskin**

Chair

**Carol Soccio**

Vice Chair

**Bruce Alton**

**Elizabeth Cruz**

**Gerald Mineghino**

**Phyllis Ortman**

**Don Temple**



## Airport Management

**Mario Rodriguez**

Airport Director

**Christine Edwards**

Operations Bureau Manager

**Claudia Lewis**

Administrative Officer

**Juan López-Rios**

Leasing & Development Officer

**Sharon Diggs-Jackson**

Public Affairs Officer

**Nancy Trent**

Facilities Management Officer

**Fred Peña**

Superintendent of Airside Operations

**Mario Fabila**

Superintendent of Noise Compliance

**Lt. John Blood**

Acting Superintendent of Security

**Chris Kunze**

Special Airport Advisor



# Long Beach Airport Monthly Updates September 2009

## Long Beach Airport QuieterHome® Program

On September 16, 2008, City Council authorized the City Manager to enter into a contract with C&S Companies for program design, management and construction management services for the Residential Sound Attenuation Program, now titled the "Long Beach Quieter Homes Program."

Staff presented the comprehensive QuieterHome Program to City Council on October 6, 2009. At that time City Council adopted the 2008 65 dB CNEL noise contour. Following City Council's action, the Program to provide sound attenuation of all homes within the 65 dB CNEL commenced October 7, 2009. At this time the Program includes 27 homes on the approach (SE) end of the airport's main runway. The contour will be re-evaluated annually. If additional homes are in the 65 dB contour, they too will be receive sound attenuation as provided by state and federal guidelines.

### Fundamental Program Goals

The goal of the Long Beach Airport land use compatibility program is to comply with Title 21 of the California State Code and federal guidelines. Specifically, the Program will be consistent with guidelines stated in Federal Aviation Administration (FAA) Order 5100.38C, Airport Improvement Program Handbook and Report No. DOT/FAA/PP-92-5, Guidelines for the Sound Insulation of Residences Exposed to Aircraft Operations. The Program's acoustic goals, as stated in Order 5100.38C are twofold:

- Target interior noise levels in all noise-sensitive habitable areas at 45 decibels (dB) Community Noise Equivalent Level (CNEL) OR LESS.
- Achieve at least a five (5) dB improvement in the Noise Level Reduction (NLR) in each noise-sensitive habitable space. A five (5) dB change would be perceived by the average person and any residential noise insulation project should be designed to provide at least that improvement in NLF as a marginal minimum.

### Identified Program Structure

The following components have been completed:

- RFP Preparation and Selection, March 2008
- Council Approval – Award of Contract and Pilot Homes Funding, September 16, 2008
- Kick-Off Meeting, December 9, 2008
- Program Planning and Development, February 2, 2009
- Completed Draft Policies & Procedures Manual, April 2, 2009
- Comprehensive Program Schedule, completed in May 2009
- Community Information Meeting, scheduled for Thursday, October 29, 2009, 6:30 - 8:00 p.m., at The Grand, 4101 E. Willow Ave., Long Beach, CA 90815



# MONTHLY AIRPORT ACTIVITY

## Current Month & Calendar Year-to-Date Statistics

### September 2009

	September			Year-to-Date		
	2009	2008	%Change	2009	2008	%Change
<b>Total Passenger Traffic</b>	235,421	227,753	3.4%	2,214,107	2,196,682	0.8%
<b>Enplaned Passengers</b>	<b>Load</b>	<b>Load</b>		<b>Load</b>	<b>Load</b>	
Alaska Airlines/Horizon						
Air	80% 11,507	78% 9,658	19.1%	79% 114,504	77% 86,052	33.1%
Delta/SkyWest Airlines	70% 6,257	67% 6,289	-0.5%	78% 62,441	90% 58,381	7.0%
ExpressJet Airlines	N/A N/A	84% 211	N/A	N/A N/A	59% 40,209	N/A
JetBlue Airways	77% 92,096	77% 89,518	2.9%	80% 864,930	78% 836,788	3.4%
US Airways	75% 7,445	78% 7,424	0.3%	76% 67,772	84% 78,542	-13.7%
<b>Total</b>	77% 117,305	76% 113,100	3.7%	79% 1,109,647	78% 1,099,972	0.9%
<b>Airline Landings</b>	1,259	1,135	10.9%	11,358	11,835	-4.0%
<b>Air Cargo</b>						
US Tons	2,994	3,688	-18.8%	26,248	36,355	-27.8%
Metric Tons	2,715	3,345	-18.8%	23,807	32,974	-27.8%

#### Flight Slot Allocations:

At month-end, Long Beach Airport had 41 allocated Air Carrier flight slots – Alaska (5), JetBlue (29), US Airways (4), FedEx (1), UPS (2) and eight allocated Commuter Carrier flight slots— Delta (5), Horizon (3).

Seventeen Commuter Carrier flight slots remain available for allocation.

#### Definitions:

**Total Passenger Traffic** — Total number of airline passengers both enplaned (departures) and deplaned (arrivals).

**Air Carrier** — A scheduled passenger or cargo airplane, certified under FAR Part 121, 125 or 135, with a maximum takeoff weight of 75,000 lbs. or over.

**Commuter Carrier** — A scheduled passenger or cargo airplane, certified under FAR Part 121, 125 or 135, with a maximum takeoff weight under 75,000 lbs.

**Air Cargo** — Cargo carried by aircraft, both inbound and outbound.

# COMMERCIAL LATE NIGHT ACTIVITY

## Current Month & Year-To-Date Statistics (10 pm—7 am)

### September 2009

September				CY-T-D 2009		
	2009	2008	%Change	2009	2008	%Change
<b>Air Carrier &amp; Commuter Operations</b>	<b>2,443</b>	<b>2,298</b>	<b>6.3%</b>	<b>22,832</b>	<b>19,896</b>	<b>14.8%</b>
<b>10pm - 11pm Operations</b>						
Alaska	1	1	0.0%	17	26	-34.6%
Delta/SkyWest	0	0		5	1	400.0%
DHL/Airborne	0	0		0	0	
FedEx	0	0		0	0	
JetBlue Airways	10	4	150.0%	182	235	-22.6%
UPS	0	0		2	0	
Express Jet	0	0		0	1	-100.0%
US Airways/America West	2	1	100.0%	8	18	-55.6%
<b>Total</b>	<b>13</b>	<b>6</b>	<b>116.7%</b>	<b>214</b>	<b>281</b>	<b>-23.8%</b>
<b>11pm - 7am Operations</b>	<b>2009</b>	<b>2008</b>	<b>%Change</b>	<b>2009</b>	<b>2008</b>	<b>%Change</b>
Alaska	0	0		1	5	-80.0%
Delta/SkyWest	0	6	-100.0%	1	33	-97.0%
DHL/Airborne	0	0		0	0	
FedEx	0	0		0	0	
JetBlue Airways*	2	0		45	83	-45.8%
UPS	0	0		0	1	-100.0%
Express Jet	0	0		0	4	-100.0%
US Airways/America West	1	0		29	5	480.0%
<b>Total</b>	<b>3</b>	<b>6</b>	<b>-50.0%</b>	<b>76</b>	<b>131</b>	<b>-42.0%</b>
<b>10 pm - 7 am Grand Total</b>	<b>16</b>	<b>12</b>	<b>33.3%</b>	<b>290</b>	<b>412</b>	<b>-29.6%</b>

- 0.66% (16 of 2,443) of total commercial operations occurred between 10 pm—7 am.
- 2.3 flights—Nightly average for all late night commercial flights, includes unanticipated delays.
- 0.1 flights— Nightly average for commercial flights after 11 pm.

\* JetBlue had one Unanticipated Delay that was converted to a violation and one day time violation.

# NOISE VIOLATIONS

## Current Month and CY-T-D Statistics for Long Beach Airport September 2009

September 2009				CY-T-D 2009		
Air Carrier Violations	2009	2008	% Change	2009	2008	% Change
Alaska	0	0		1	3	-66.7%
American Airlines	0	0		0	0	
DHL/Airborne	0	0		0	0	
FedEx	0	0		0	1	-100.0%
JetBlue Airways	4	0		47	79	-40.5%
UPS	0	0		1	4	-75.0%
US Airways/America West	0	0		3	4	-25.0%
<b>Total</b>	<b>4</b>	<b>2</b>	<b>100.0%</b>	<b>52</b>	<b>91</b>	<b>-42.9%</b>
Commuter Violations	2009	2008	% Change	2009	2008	% Change
Delta/SkyWest	0	0		1	2	-50.0%
Express Jet	0	0		0	2	-100.0%
US Airways/America West	0	0		0	1	
<b>Total</b>	<b>0</b>	<b>0</b>		<b>1</b>	<b>5</b>	<b>-80.0%</b>
Non-Commercial Violations	2009	2008	% Change	2009	2008	% Change
All GA, Charter & Other	11	17	-35.3%	196	173	13.3%
<b>Total Noise Violations</b>	<b>15</b>	<b>19</b>	<b>-21.1%</b>	<b>249</b>	<b>269</b>	<b>-7.4%</b>
Monetary Fines						
Airport Monetary Fines Issued	\$900	\$2,000		\$12,400	\$16,200	
Consent Decree Fines Issued	\$12,000	\$0		\$192,000	\$377,700	
<b>Total Monetary Fines Issued</b>	<b>\$12,900</b>	<b>\$2,000</b>		<b>\$204,400</b>	<b>\$393,900</b>	
Airport Operations (FAA)	2009	2008	% Change	2009	2008	% Change
Air Carrier + Commuter Carriers	2,443	2,298	6.3%	22,832	19,896	14.8%
Air Taxi + General Aviation	24,306	25,288	-3.9%	202,925	241,677	-16.0%
Military Operations	66	65	1.5%	577	398	45.0%
<b>Total Aircraft Operations</b>	<b>26,815</b>	<b>27,651</b>	<b>-3.0%</b>	<b>226,334</b>	<b>261,971</b>	<b>-13.6%</b>

0.06% (15 of 26,815) of the Airport's total aircraft operations (Commercial & GA) resulted in a noise violation.

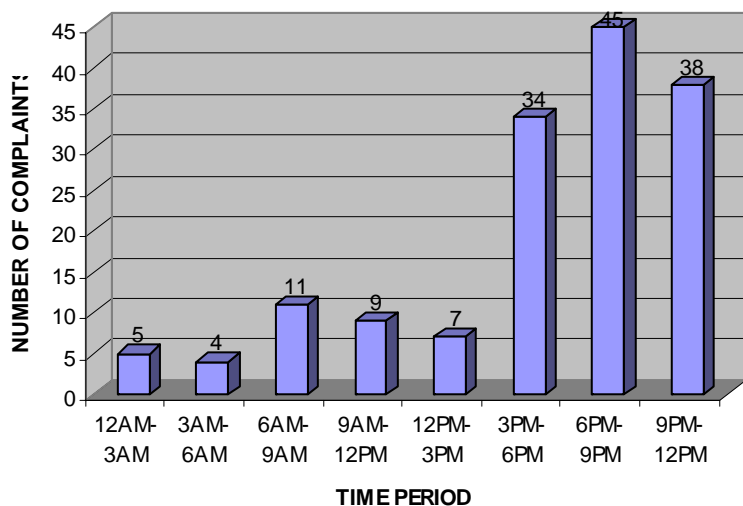
0.16% (4 of 2,443) of Airport's Commercial Operations (Commercial & Commuter) resulted in a noise violation.

### Definitions:

GA — General Aviation

# NOISE COMPLAINTS

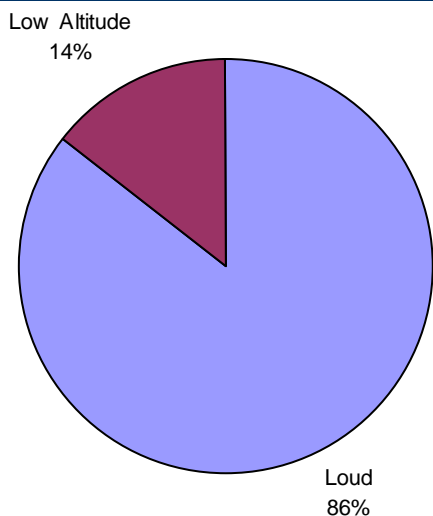
### Complaints per Hour



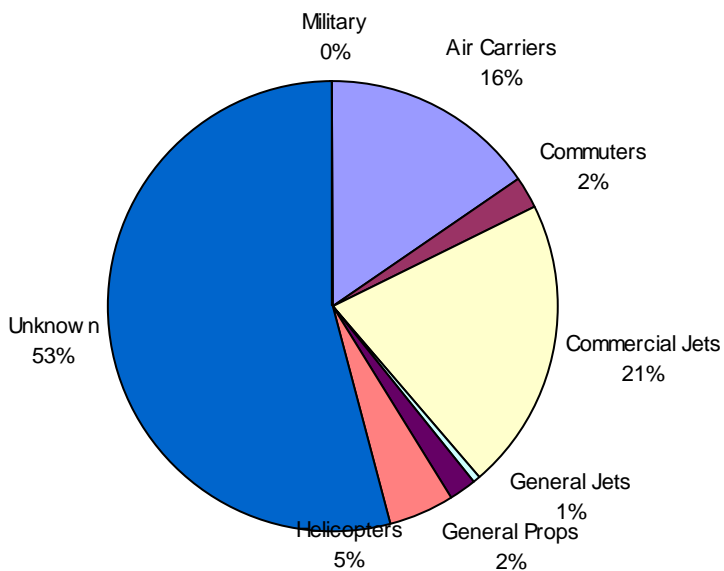
### Complaints By Zip Code

90740	1
90804	1
90805	15
90807	21
90808	11
90815	2
92648	9
92649	4
Zip Code Unknown	89
<b>Total</b>	<b>153</b>

### Complaints by Type of Concern



### Complaints by Type of Aircraft



## NOISE VIOLATIONS

OWNERNAME	DATE	TIME	A/D	RWY	A/C TYPE	RMTID	SEL	LIMIT	STATUS
E&J Logistics LLC	09/06/09	23:13:22	D	30	C510	9	85.8	79.0	VIOLATION
Private	09/10/09	1:39:50	A	30	C340	10	84.2	79.0	VIOLATION
Professional Jet II LLC	09/10/09	23:10:15	D	30	GLF4	9	83.9	79.0	VIOLATION
JetBlue Airways Corporation	09/10/09	23:11:47	A	30	A320	10	91.9	79.0	VIO & ALT ENF
Longin Consultants LLC	09/10/09	23:28:01	A	30	C550	10	83.7	79.0	VIOLATION
Cowpoke Aircraft Holdings	09/14/09	3:51:35	A	30	GALX	10	88	79.0	VIOLATION
World Healing Center Church	09/19/09	23:40:12	A	30	GLF4	10	89.9	79.0	VIOLATION
Desert Rain Aviation Inc.	09/22/09	1:13:21	A	30	C525	10	86.3	79.0	VIOLATION
Private	09/23/09	10:31:10	D	25R	T210	6	94.4	92.0	VIOLATION
JetBlue Airways Corporation	09/23/09	23:01:28	D	30	A320	9	94.4	90.0	VIOLATION
USA Jet Airlines	09/25/09	23:14:03	D	30	FA20	9	94.6	79.0	VIOLATION
Private	09/25/09	23:56:49	A	30	PA44	10	84.9	79.0	VIOLATION
JetBlue Airways Corporation	09/27/09	7:56:52	D	25R	E190	6	97.1	92.0	VIOLATION
Sunshine Aero Industries Inc.	09/27/09	10:54:41	D	30	SBR1	9	107	102.5	VIOLATION
JetBlue Airways Corporation	09/28/09	0:33:25	A	30	A320	10	93.6	79.0	VIO & ALT ENF

### Airport Welcomes New Staff & Interns

Maintenance and Facilities continues to grow. Recently Dean Crider transferred from the Water Department as the Airport Maintenance Supervisor. With Dean's leadership also comes 24 years of experience in carpentry, ADA knowledge, sewer maintenance, fleet and personnel management, just to name a few. Joining Dean's staff are two new Maintenance Assistants, Omar Dubon and Miguel Vargas.

Over the last 25 years, the City of Long Beach has been attracting the nation's top graduate students and professionals to work in the exciting field of local government, via its Management Assistant Program. The Airport is proud to introduce Jordan Syms as the Airport's Management Assistant. Jordan comes to the Airport with a Master's degree in Urban Planning, with an emphasis in Regional and International Economic Development, from UCLA and a Bachelor's degree in Anthropology from UC Berkeley. As California's oldest training program of its kind, is a unique and rewarding opportunity to work in local government as an integral part of a dynamic city team.

The Airport's Leasing and Business Development division is happy to announce Leon Blum as its intern. Leon is an MBA candidate at the Merage School of Business at UC Irvine completing his final year. With a background in communications and interests in strategic planning, aviation and travel, Leon is a natural fit for the Airport.

### Airport Congratulates Margarita Wantz

Margarita Wantz has been with the City of Long Beach for 12 years - all of which have been at the Airport. Recently, Margarita was promoted to Maintenance Assistant III. Her new duties include assisting with the oversight of the Building Services division.

### Future Airport Staff

The Airport is proud to welcome three new babies to our family. Accounting Clerk Norma Garcia gave birth to Alexa Michelle Garcia on September 24 at 11:17 a.m. - weight: 7 lbs., 11 oz. Building Services Supervisor Avel Alberto's wife, Tania, gave birth to Andrea Taylor M. Alberto on September 26 at 6:30 a.m. - weight: 6 lbs., 3 oz. Airport Engineer Arlene Lopez gave birth to Caleb John Lopez on September 28 at 9:27 p.m. - weight: 6 lbs., 12 oz. All three moms and babies are healthy, happy and doing well.

### Long Beach Aviation Friends

The next quarterly meeting, scheduled for **Wednesday, January 20, 2010 at 6:00 p.m.**, will feature Airport history and updates. Meetings are hosted by AirFlite, at 3250 Air-Flite Way, Long Beach, CA 90807. All meetings are open to the public.

To join the group, RSVP, or to get more information, please call Airport Public Affairs at (562) 570-2674 or email [longbeachaviationfriends@verizon.net](mailto:longbeachaviationfriends@verizon.net).







## Long Beach Airport

4100 Donald Douglas Drive, Long Beach, CA 90808

[www.lgb.org](http://www.lgb.org) • [lgbapt@longbeach.gov](mailto:lgbapt@longbeach.gov)

Administration • (562) 570-2600

Public Affairs & Noise Abatement • (562) 570-2678

24-Hour Security • (562) 570-2640